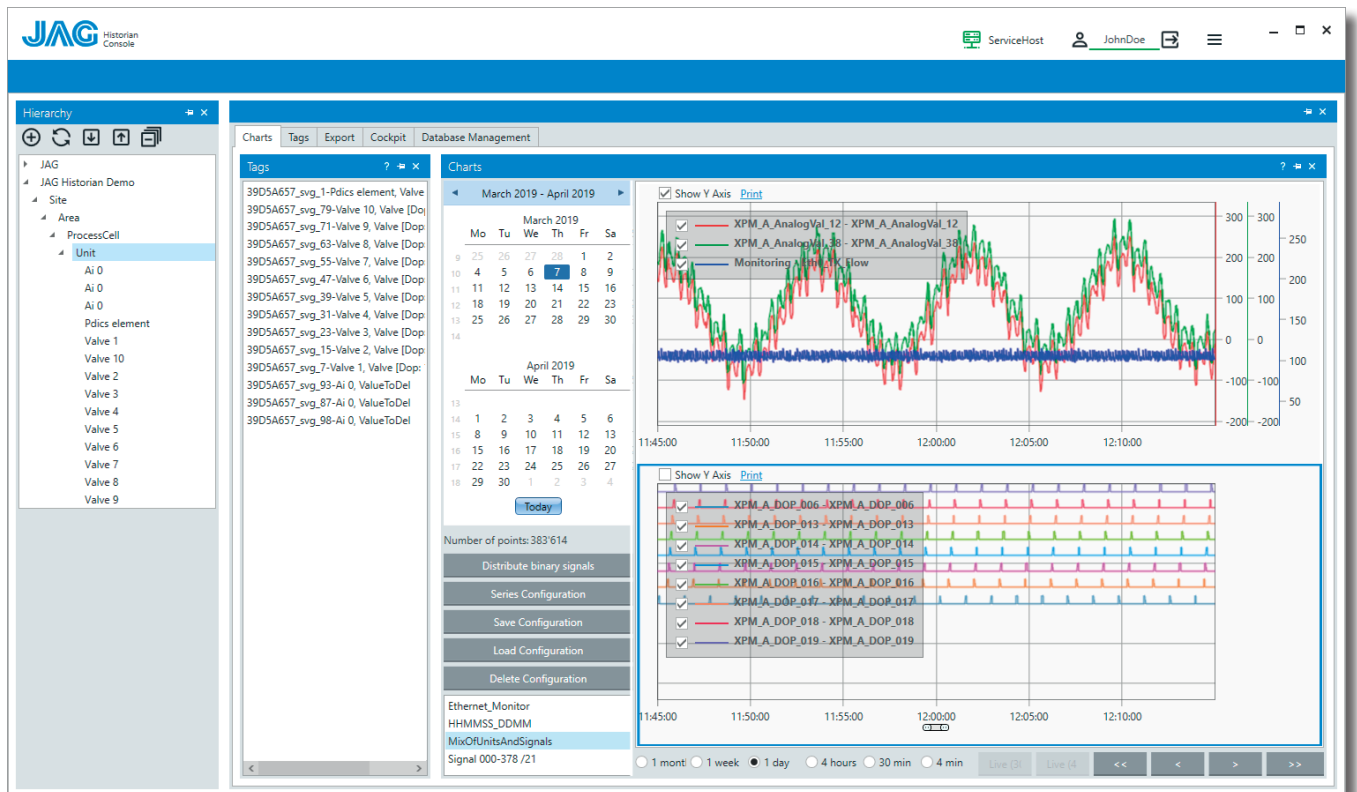


# JAG HIS JAG Historian



## Data is the new oil

Key features of modern production systems such as traceability, process analysis and continuous improvement rely on permanent data collection.

With the JAG Historian we offer a reliable and easy to use solution for the capture, storage and analysis of historical data.

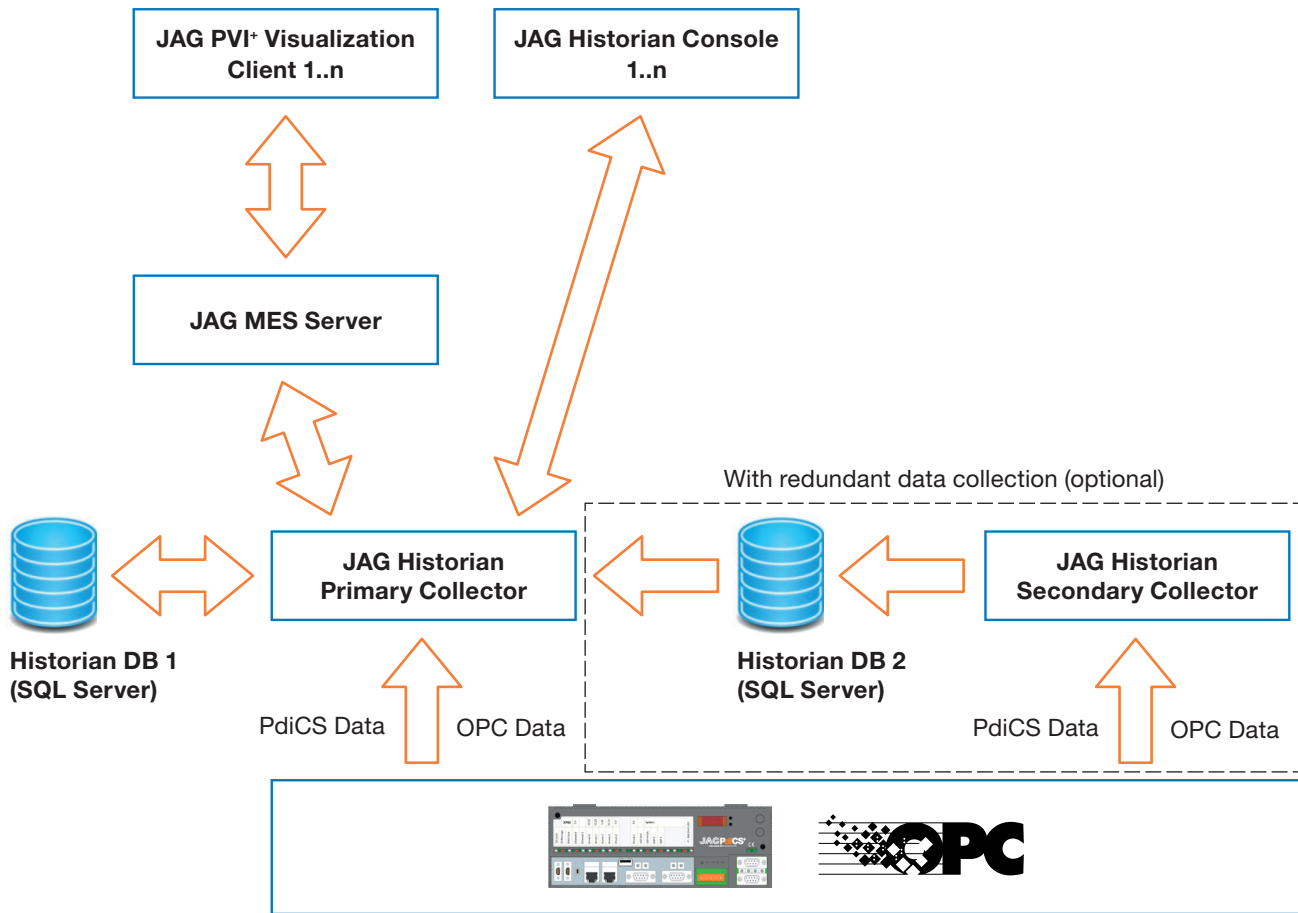
Collecting data is one thing, making sense of it another. Unlike other data historian solutions JAG Historian comes with a user interface which is dedicated to ad-hoc data analysis: the Historian Console.

It allows creating customized views by simple drag and drop. Large numbers of datapoints can be browsed fluidly in a modern and simple to use graphical user interface.

## Features and benefits of the JAG Historian

- Collect data from JAG PdiCS modules
- Collect data from third party systems (via OPC)
- Optional: redundant data collection to ensure seamless data collection
- Safe, SQL-based data storage
- Powerful data compression
- Delivery of historical data to the JAG PVI+ visualization
- Ad-hoc data analysis using the Historian Console
- Data export in Excel format

## System overview



## Architecture

Historian Collectors read data from JAG PdiCS modules or – in the case of third party products – from OPC Servers. A secondary Collector can be added to ensure a seamless data collection.

The historical data is stored in SQL databases. The main advantages of the SQL-based approach are scalability and the ease of data management (back-up, restore etc.).

The Historian Collectors offer a sophisticated and configurable data compression algorithm. This allows storing a lot of process values and retain them for a long time while creating a reasonable data volume.

The historical data is often viewed by using the JAG PVI+ visualization, which is part of the JAG MES framework. The primary Collector reads the historical data from the database and forwards it to the JAG MES Server.

Unlike other process historians, JAG Historian comes with a Console designed for the ad-hoc data analysis of analog and digital process data. Custom views can be created by simple drag and drop. TAGs are chosen from a tree view structured according to the plant hierarchy (S95/S88 oriented) and are dropped into one or several charts. Thanks to the Historian Console, data analysis during commissioning and operation is made simple.

## Licensing

From a licensing point of view only the Historian Collectors are considered. The number of Clients (JAG PVI+ visualizations and Historian Consoles) is not taken into account.

Licenses are available in the range from 100 to 5000 TAGs, each size with our without redundant data collection (see table below).

As an example, 1800 TAGs can be covered by a 2500 TAG license. Leaving some margin is recommended, since the number of TAGs usually increases in the commissioning phase of projects.

License	w/o redundance	With redundance
100 TAGs	M022.240.100.010	M022.240.200.010
300 TAGs	M022.240.100.030	M022.240.200.030
500 TAGs	M022.240.100.050	M022.240.200.050
1000 TAGs	M022.240.100.100	M022.240.200.100
2500 TAGs	M022.240.100.250	M022.240.200.250
5000 TAGs	M022.240.100.500	M022.240.200.500